



Monitor



Folded shaft



MALÅ Rough Terrain Cart (RTC) as option



Easy Locator Control unit



MALÅ Easy Locator

Ground Penetrating Radar for Utility Locating

The MALÅ Easy Locator is an easy to use Ground Penetrating Radar (GPR) system designed to meet your utility locating needs. The MALÅ Easy Locator is the tool of choice for everyone who need to quickly and easily identify the presence of buried utility infrastructure, metallic as well as non-metallic.

Modern utility installations are predominantly buried and non-metallic. In order to locate and find such installations we can't depend solely on conventional locating tools. GPR technology fills the gap created by modern materials.

Locate professionals know the difficulties associated with non-metallic utilities and that conventional locating tools leave you a few pieces short. The MALÅ Easy Locator Ground Penetrating Radar system is the industry standard to help professionals overcome the locating problems created by modern utility materials.

GPR is the only utility locating technology available that does not require a physical connection to the utility or relying on utilities radiating detectable electromagnetic (EM) fields by itself.

Main Applications

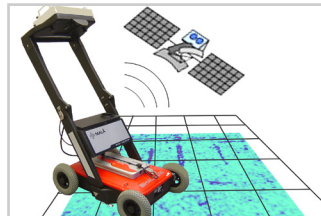
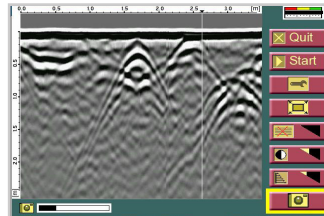
The MALÅ Easy Locator revolutionized the utility locating industry and established itself quickly as the GPR tool of choice. Utility locating professionals world-wide are using the MALÅ Easy Locator for applications such as:

- Utility detection
- Utility mapping
- Underground Storage Tank (UST) detection
- Void detection
- Locate service or illegal connections
- Lost cover, valve, cable box or vault detection
- And more...

Specific Features

The MALÅ Easy Locator's simple yet ergonomic and field rugged design, intuitive user interface and clear display has led to its success and it remains as the primary choice in its field.

- Minimal set up time
- One button operation
- Detects metallic and non-metallic utilities
- Back up cursor for quick and accurate utility marking
- 10.4" color LCD screen
- Compact, portable and field rugged design – IP65
- Optional GPS and 3D Grid Project Support
- Available in three different languages (English, Swedish, and Chinese)



System Configuration

The MALÅ Easy Locator was designed to make GPR surveys effective and simple. The system is deployed in seconds and the fully automated software empowers users to collect survey data within minutes of arriving at a job site.

With the Easy Locator, MALÅ introduced the much appreciated and unique single push/turn button, now available on all MALÅ Monitor systems and field computers.

The TFT LCD color monitor delivers high resolution and extraordinary, market leading visibility even in direct sunlight.

The software was specified by experienced utility detection professionals giving it unique and practical features such as the back up cursor for easy interpretation and accurate on-site marking of utilities as well as screen captures of data for reporting. The MALÅ Easy Locator systems also support GPS data input as well as 3D Grid project data measurements as optional features.

Technical Specification

Power supply: Li-Ion 11,1V battery

Operating time: Approx. 5h

Operating temp: -20° to +50°C or 0° to 120 °F

Environmental: IP65

Display: 10.4" Color TFT Transmissive LCD

Dim. with wheels: 67x47x19cm / 26"x19"x7"
(excluding handle)

Weight: 18 kg / 40 lb (Shallow), 19 kg / 42 lb (Mid)

Antennas:

Shallow: 500 MHz. Shallow penetration, highest resolution.

Mid: 350 MHz. Deeper penetration, high resolution.

See our webpage for latest information

Corporate Headquarters

MALÅ Geoscience
Skolgatan 11, SE-930 70
Malå, Sweden
Phone: +46 953 345 50
Fax: +46 953 345 67
E-mail: sales@malags.com

Offices

USA: MALÅ Geoscience USA, Inc., 465 Deanna Lane, Charleston, SC 29492
Phone: +1 843 852 5021, Fax: +1 843 284 0684, E-mail: sales.usa@malags.com

China: MALÅ Geoscience (China), Room 2604, Yuan Chen Xin BLDG, No.12 Yu Min Road Chao Yang District, Beijing 100029
Phone: +86 108 225 0728, Fax: +86 108 225 0815, E-mail: sales@malags.com

Malaysia: MALÅ Geoscience (South East Asia), 9-B, Jalan Prima 9, Metro Prima, Kepong, 52100 Kuala Lumpur, Malaysia
Phone: +60 (0)3 6250 7351; Fax: +60 (0)3 6250 2072, E-mail: sales@malags.com

Australia: MALÅ Geoscience (Oceania), 4/105A Ben Boyd Road, Neytral Bay, NSW 2089, Australia
Phone: +61 438 278 902, Fax: +61 2 9908 1484, E-mail: sales@malags.com